



## Take to the Skies with Fly the Line!

**Fly the Line** is the ultimate career-driven experience for flight simulator enthusiasts, now arriving in your favourite sim platforms! Step into the cockpit and chart your journey from **Junior First Officer** to **Fleet Captain**, building your aviation legacy one flight at a time.

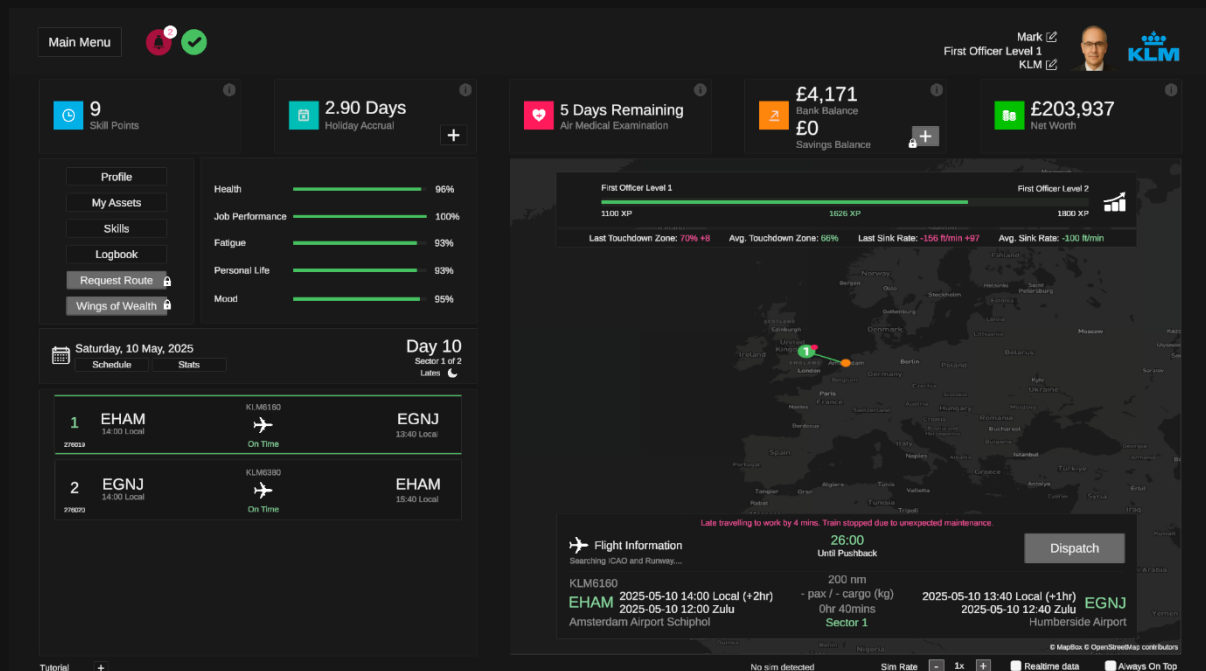
Whether you aspire to join a renowned airline or launch your own virtual fleet, *Fly the Line* puts you in control. Earn **cash and XP** with every successful flight and promotion, and use your downtime to enhance your lifestyle and well-being – earn your stripes in the air, and enjoy the perks on the ground.

Choose from three dynamic game modes to suit your playstyle:

- Career
- Free Play
- Schedule

# Career

Career mode is the bread and butter of *Fly the Line*, offering a deeply immersive journey that captures the full scope of an airline pilot's professional life - not just the time spent in the cockpit.



Begin your career by accepting a position at your chosen airline, starting out as a **Junior First Officer** with big ambitions and a modest bank balance. After selecting your airline's hub, *Fly the Line* generates a dynamic route map based on that airline's network. If you've chosen a real-world carrier, the system pulls from authentic schedule databases to create realistic flight rosters for maximum immersion.

Once hired, you'll receive a detailed schedule - your personal roster - outlining your assigned routes, departure times, and days of the week. Don't worry, though: all schedules are synced with simulator time, so you won't be expected to report to your virtual cockpit at 6 a.m. sharp on a Monday!

As you complete flights, you'll earn **money, XP, and skill points**. XP accelerates your progression through the ranks, bringing you closer to the prestigious title of **Fleet Captain**. Meanwhile, your earnings can be used to enhance your lifestyle both on and off duty.

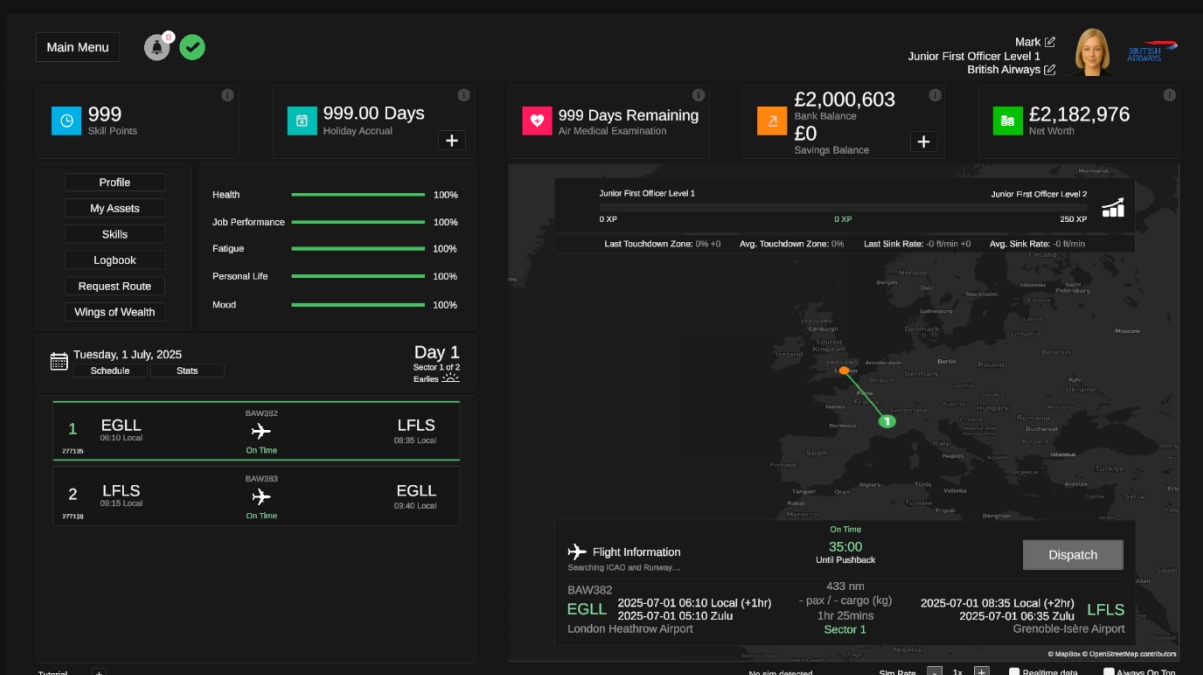
But flying is only part of the job. Managing your **personal well-being** is just as critical as nailing that perfect landing. As you gain experience, you'll unlock opportunities to upgrade your home, enjoy leisure activities, and even improve your daily commute. These lifestyle choices directly impact key aspects of your pilot profile - **Health, Job Performance, Fatigue, Personal Life, and Mood** - all of which influence your career trajectory. Neglecting them could have real consequences on your performance and progression.

## Free Play

Free Play Mode offers the full *Fly the Line* experience—without the constraints. From day one, you'll have **unlimited cash, skill points, and rest days**, giving you immediate access to every unlockable feature and lifestyle upgrade. No grinding, no waiting—just pure flying freedom.

You'll still begin your journey as a **Junior First Officer** with **0 XP**, and you'll earn XP and promotions by completing flights, just like in Career Mode. However, your boosted starting resources mean faster progression and greater flexibility in how you shape your pilot's life and career.

Whether you're looking to explore the full range of features or simply enjoy a more relaxed, sandbox-style experience, Free Play Mode puts you in control - no strings attached.



# Schedule

Schedule Mode strips away the career progression elements of *Fly the Line* and focuses purely on **real-world airline operations**. Think of it as your own **offline virtual airline**, where you can enjoy structured flying without the pressure of career management.

After selecting a real-world airline and one of its hubs, you'll be assigned routes based on that airline's **authentic flight schedules**, complete with **real-world flight numbers** for maximum immersion. Your flights are tracked, logged, and recorded in your personal logbook—perfect for pilots who value realism and routine.

With the entire world at your fingertips and a diverse fleet in your hangar, Schedule Mode is ideal for those who:

- Struggle to decide where to fly next
- Want the structure of a virtual airline without the strict activity requirements

No deadlines. No quotas. Just realistic, schedule-based flying – on your terms.

The screenshot displays the 'Schedule Mode' interface of the Fly the Line simulator. At the top, a 'Main Menu' button is on the left, and a user profile for 'Junior First Officer Level 1 Alliance Airlines' is on the right. A status bar shows performance metrics: 'Last Touchdown Zone: 68% +68', 'Avg. Touchdown Zone: 68%', 'Last Sink Rate: -134 ft/min +134', and 'Avg. Sink Rate: -134 ft/min'. Below this, a 'This Week' summary box lists statistics: 66 Total Pax Carried, 3,630kg Total Cargo Carried, 751 nm Total Distance Flown, YBCS as Favourite Destination, 2h 41m 0s Avg. Flight Time, -134 ft/min at YBCS Best Landing, 2h 41m Shortest Flight, 2h 41m Longest Flight, and -134 ft/min at YBCS Worst Landing. The 'Tuesday, 1 July, 2025' section shows a flight schedule with two entries: 1. YBBN (06:08 Local) to YBCS (08:57 Local) via UTY3066, and 2. YBCS (09:22 Local) to YBBN (11:47 Local) via UTY4812, both marked 'On Time'. A map of Australia shows the flight path between Cairns and Brisbane. The 'Flight Information' panel at the bottom right details the current flight UTY4812, showing a 751 nm route from Cairns International Airport to Brisbane International Airport, with a 2hr 25min duration. It also displays the current time as 25:00 and a 'Dispatch' button. The bottom status bar indicates 'No sim detected', 'Sim Rate 1x', and options for 'Realtime data' and 'Always On Top'.

# Experiment With Different Profiles

Curious to explore all three game modes without affecting your main progress? *Fly the Line* has you covered. With support for up to **eight fully independent profiles**, you can enjoy a variety of gameplay styles simultaneously - each with its own unique journey.

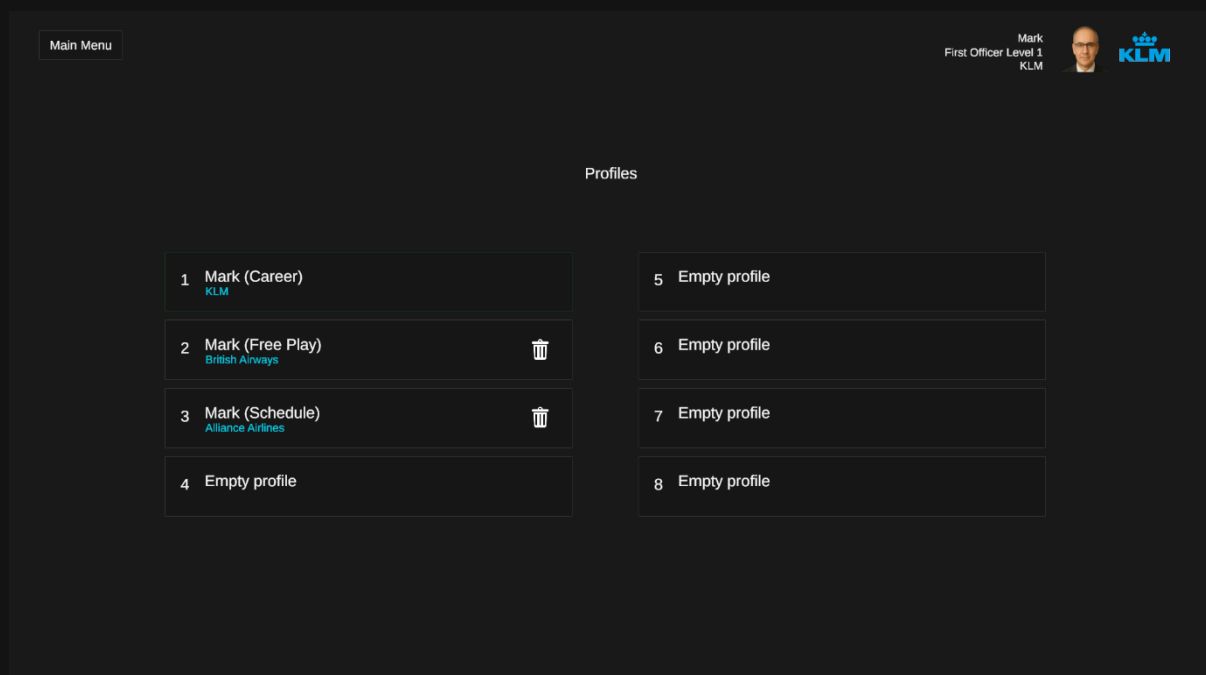
Create a dedicated **Career Mode** profile to climb the ranks and shape your lifestyle, while maintaining a separate **Schedule Mode** profile for structured flying and route inspiration. You might even run parallel careers - one with an airline based in the UK, and another operating out of Australia. The flexibility is yours.

Whether you're:

- New to flight simulation and looking for guidance,
- A completionist eager to unlock every feature,
- Or a seasoned simmer seeking a fresh way to experience virtual aviation,

*Fly the Line* offers a tailored experience for every kind of pilot.

Are you ready to **Fly the Line**?



***Just Flight***™