

Legendary Aircraft

by *Romantic Wings*

Pack 1

Mitsubishi - A6M “Zero” Fighter
Nakajima – A6M -N “Rufe” Seaplane



User Manual

Index

Overview of the items in this Add-On	3
Installing	3
The aircraft in general	4
A6M5 – Zero Fighter	5
A6M -N – Rufe Seaplane	7
Cockpit Layout	9
RJX8 – Area of Operation	11
Ships and other Objects	12
References	25
Acknowledgements	25

Overview of the items in this *Romantic Wings* Add-On.

**This Mitsubishi A6M Pack contains several folders
to be integrated into your
“Community Folder”**

**These folders are three different aircraft, one airfield
and one big library with all objects used around this airfield.
All of these objects are new to this Add-On and are not to be found in the
Microsoft/ASOBO Libraries.**



Installing:

If no specific installer is provided, just unpack the archive file:

Zero_Pack_1_v1_0.rar (using WinRAR or WinZip)

to any place on your harddrive.

Put all included folders into your MSFS2020 “Community” folder.

That's all.

! How to Find your Community folder !

Please check out the excellent Flightsim.to web-site for help:

<https://flightsim.to/help/general/locating-the-community-folder-of-my-game>

The aircraft in general:

Every included aircraft was built to represent it's real world counterpart used in World War II as closely as possible.

There are three different types of aircraft:



- The A6M5 “Zero” or “ZEKE” fighter plane in nine different liveries.
- The A6M5 “Zero” in a Kamikaze version (Pilot with Headband).
Only two liveries available.
- The A6M -N “Rufe Seaplane” in six different liveries.

All these three packages have their own folder and are independent from each other. So, if you don't like the Kamikaze version, just delete the folder Kamikaze from your community folder.

A6M5 – “Zero” Fighter:

The Mitsubishi A6M "Zero" was a long-range [carrier-based fighter aircraft](#) formerly manufactured by [Mitsubishi Aircraft Company](#), a part of [Mitsubishi Heavy Industries](#), and operated by the [Imperial Japanese Navy](#) from 1940 to 1945.

The A6M was designated as the Mitsubishi Navy Type 0 carrier fighter (零式艦上戦闘機, *rei-shiki-kanjō-sentōki*), or the Mitsubishi A6M Rei-sen. The A6M was usually referred to by its pilots as the *Reisen* (零戦, zero fighter), "0" being the last digit of the [imperial year](#) 2600 (1940) when it entered service with the Imperial Navy.

The official [Allied reporting name](#) was "Zeke", although the name "Zero" (from Type 0) was used colloquially by the [Allies](#) as well.

The Zero is considered to have been the most capable [carrier-based fighter](#) in the world when it was introduced early in [World War II](#), combining excellent maneuverability and very long range.

The [Imperial Japanese Navy Air Service](#) (IJNAS) also frequently used it as a land-based fighter.

In early combat operations, the Zero gained a reputation as a [dogfighter](#), achieving an outstanding kill ratio of 12 to 1, but by mid-1942 a combination of new tactics and the introduction of better equipment enabled Allied pilots to engage the Zero on generally equal terms.

By 1943, the Zero was less effective against newer Allied fighters due to design limitations. It lacked hydraulic boosting for its [ailerons](#) and rudder, rendering it extremely difficult to maneuver at high speeds.

By 1944, with Allied fighters approaching the A6M levels of maneuverability and consistently exceeding its firepower, armor, and speed, the A6M had largely become outdated as a fighter aircraft.

However, as design delays and production difficulties hampered the introduction of newer Japanese aircraft models, the Zero continued to serve in a front-line role until the end of the [war in the Pacific](#). During the final phases, it was also adapted for use in *kamikaze* operations. Japan produced more Zeros than any other model of combat aircraft during the war.

(Source: Wikipedia)

The nine Liveries of the „Zero“ in this pack are as follows:



✔
➤ Mitsubishi
Green Livery



➤ Mitsubishi
Museum Livery



➤ Mitsubishi
ATAIU Livery



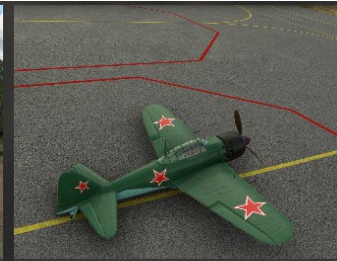
➤ Mitsubishi
Navy1 Livery



➤ Mitsubishi
USAAF Livery



➤ Mitsubishi
Trainer Livery



➤ Mitsubishi
Russia Livery



➤ Mitsubishi
grey Livery



➤ Mitsubishi
Surrender Livery

A6M -N – Rufe Seaplane

The Nakajima A6M2-N (Navy Type 2 Interceptor/Fighter-Bomber) was a single-crew [floatplane](#) based on the [Mitsubishi A6M Zero Model 11](#). The [Allied reporting name](#) for the aircraft was Rufe.

The A6M2-N floatplane was developed from the [Mitsubishi A6M Type 0](#), mainly to support amphibious operations and defend remote bases. It was based on the [A6M-2 Model 11](#) fuselage, with a modified tail and added [floats](#).

A total of 327 were built, including the original prototype.

The aircraft was deployed in 1942, referred to as the "Suisen 2" ("Hydro fighter type 2"), and was only utilized in defensive actions in the [Aleutians](#) and [Solomon Islands](#) operations. Such seaplanes were effective in harassing American [PT boats](#) at night. They could also drop flares to illuminate the PTs which were vulnerable to destroyer gunfire, and depended on cover of darkness.

The seaplane also served as an interceptor for protecting fueling depots in [Balikpapan](#) and Avon Bases ([Dutch East Indies](#)) and reinforced the [Shumushu](#) base ([North Kuriles](#)) in the same period.

Such fighters served aboard seaplane carriers *Kamikawa Maru* in the [Solomons](#) and [Kuriles](#) areas and aboard Japanese raiders [Hokoku Maru](#) and [Aikoku Maru](#) in Indian Ocean raids.

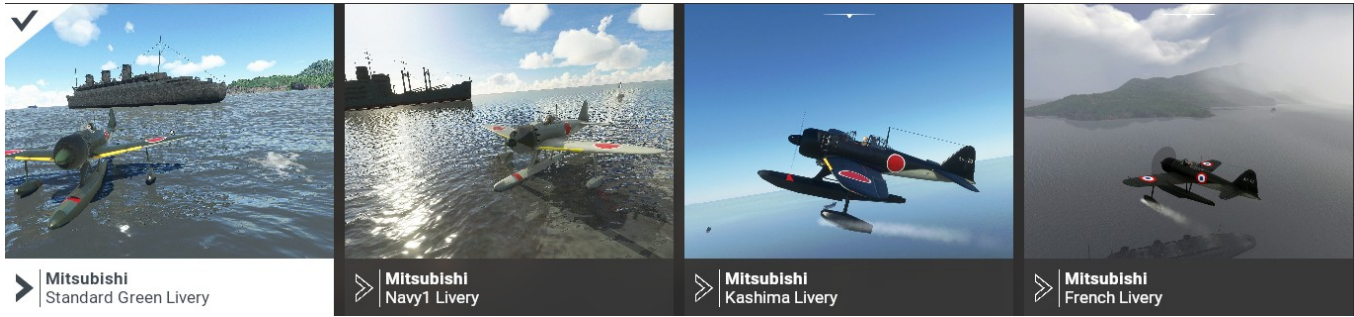
In the Aleutian Campaign this fighter engaged with RCAF [Curtiss P-40 Warhawk](#), [Lockheed P-38 Lightning](#) fighters and [Boeing B-17 Flying Fortress](#) bombers. The aircraft was used for interceptor, fighter-bomber, and short reconnaissance support for amphibious landings, among other uses.

Later in the conflict the [Otsu](#) Air Group utilized the A6M2-N as an interceptor alongside [Kawanishi N1K1 Kyofu](#) ("Rex") aircraft based in [Biwa lake](#) in the Honshū area.

The last A6M2-N in military service was a single example recovered by the French forces in Indochina after the end of World War II. It crashed shortly after being overhauled.

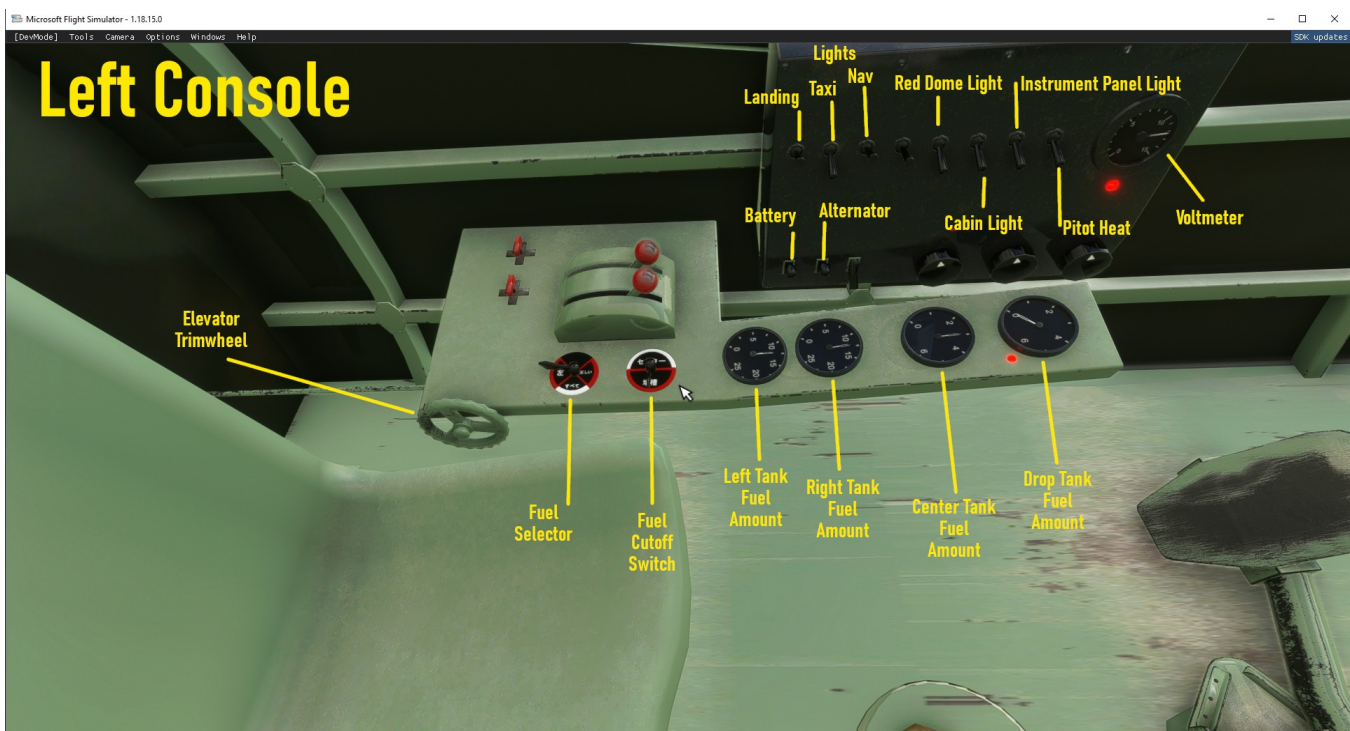
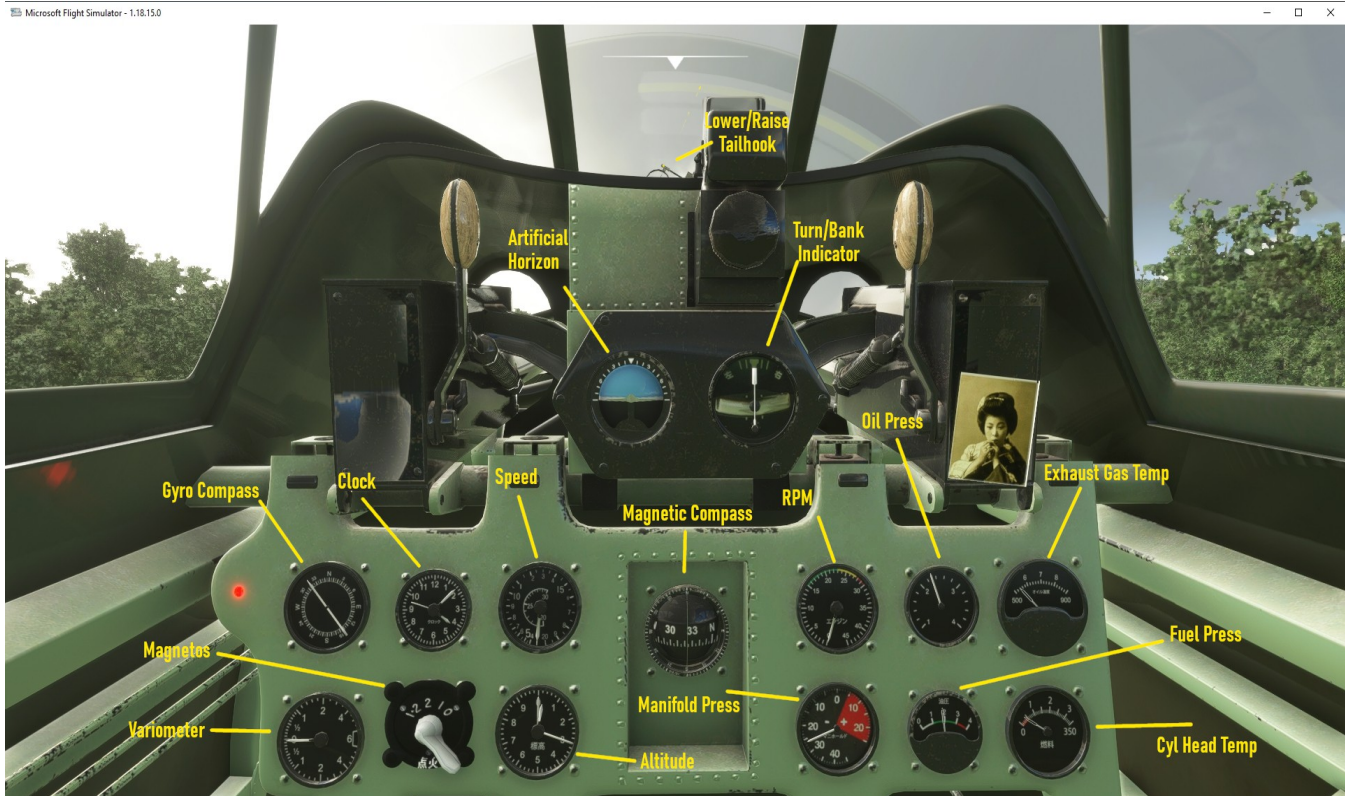
(Source: Wikipedia)

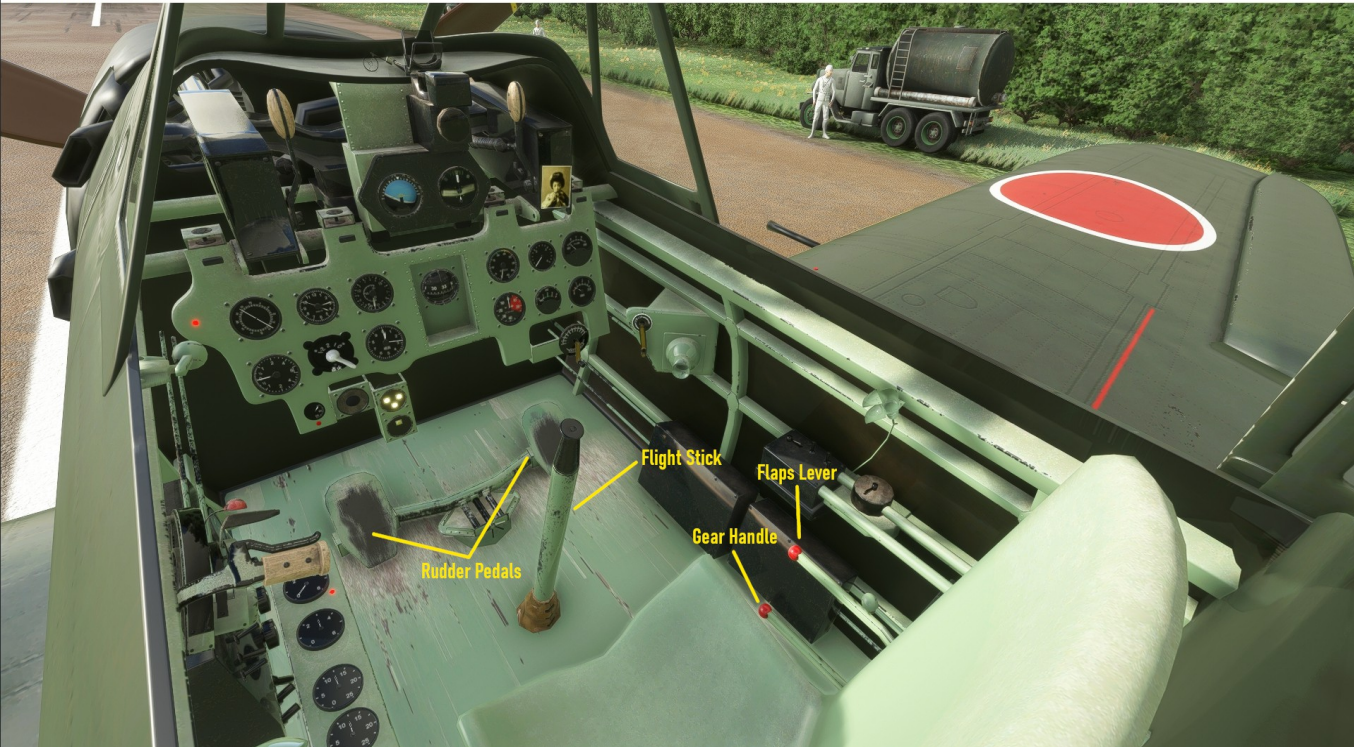
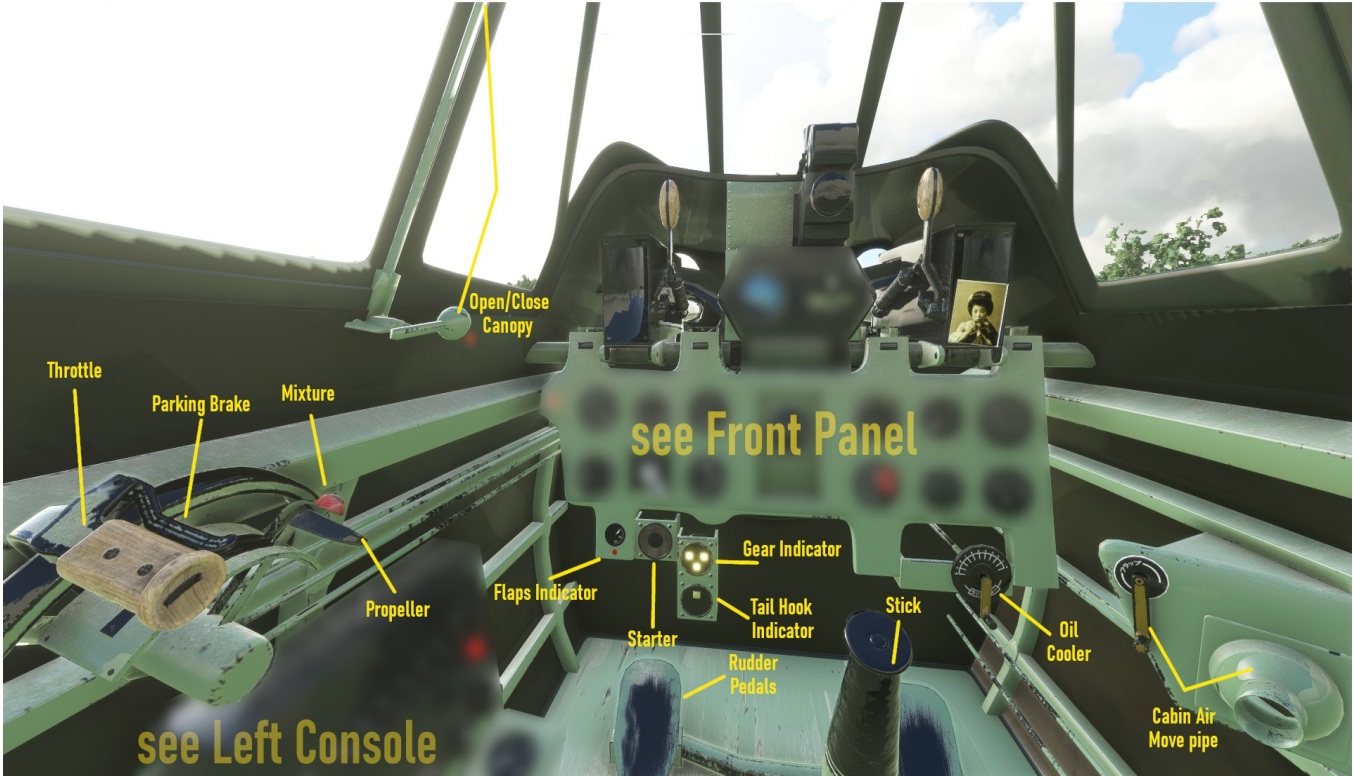
The six Liveries of the „Rufe“ in this pack are:



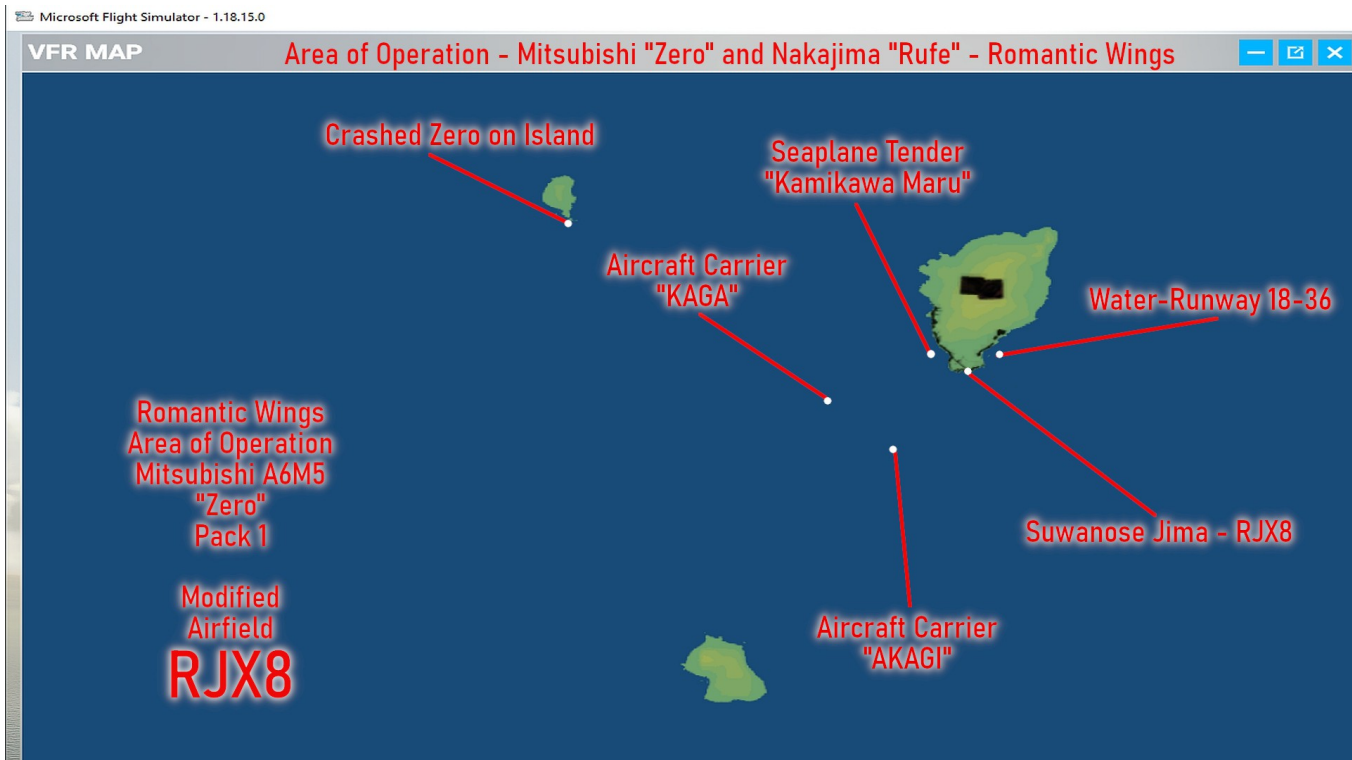
The Instruments and Handles of all A6M Aircraft

(Cockpit Layout)





RJX8 – Area of Operation:



Included in this pack is an airfield on a volcanic island in Japan.
Suwanose Jima – RJX8.

This airfield is existing in MSFS since the World Update „Japan“.
If you haven't downloaded it you should download it from your
Profile → Content Manager.

I used it to extend the playing capabilities by creating new Ships, Objects
and a Water Runway for the Seaplanes.

In the next chapter you will find the details of this new playing ground for
your “Zeros” and “Rufes”.

Have a lot of fun.

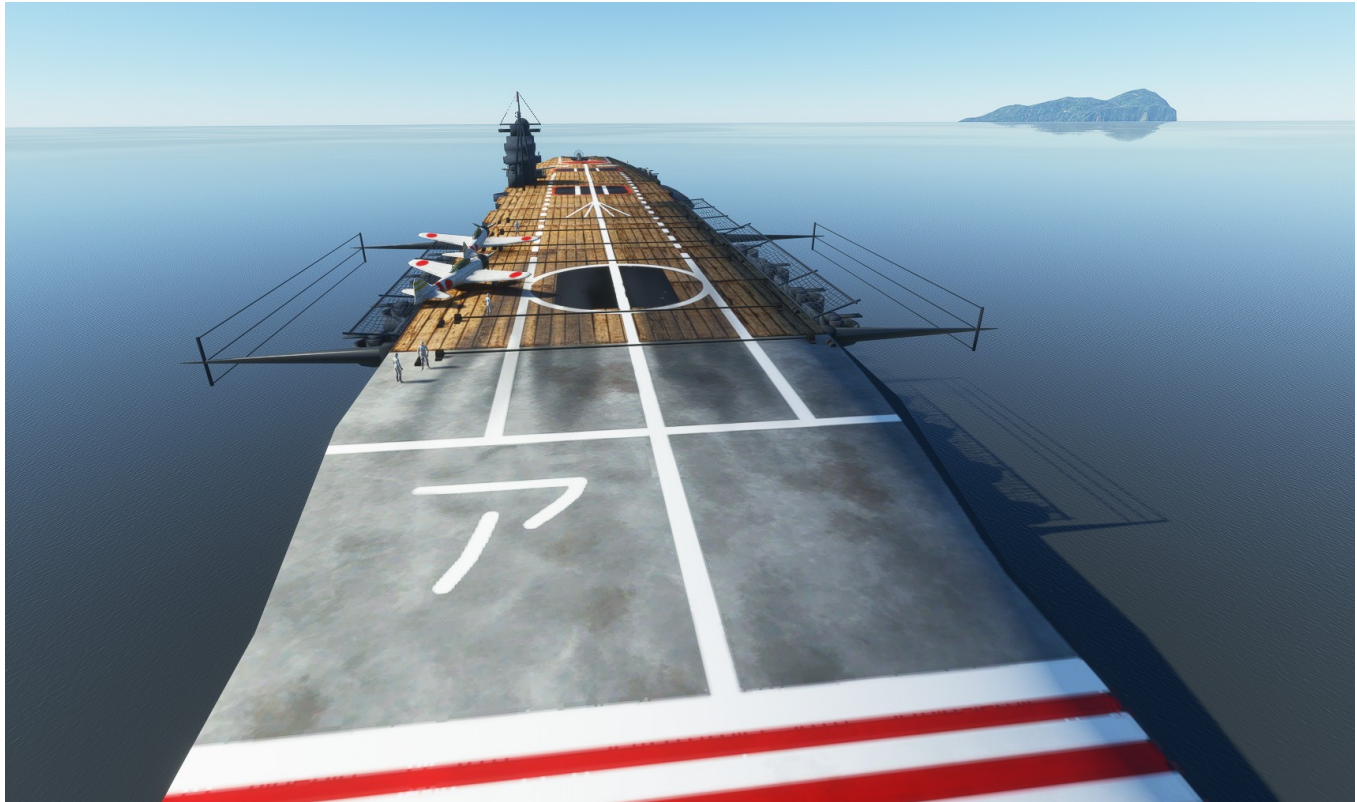
Ships and other Objects

The main ships are the two aircraft carrier “AKAGI” and “KAGA”.

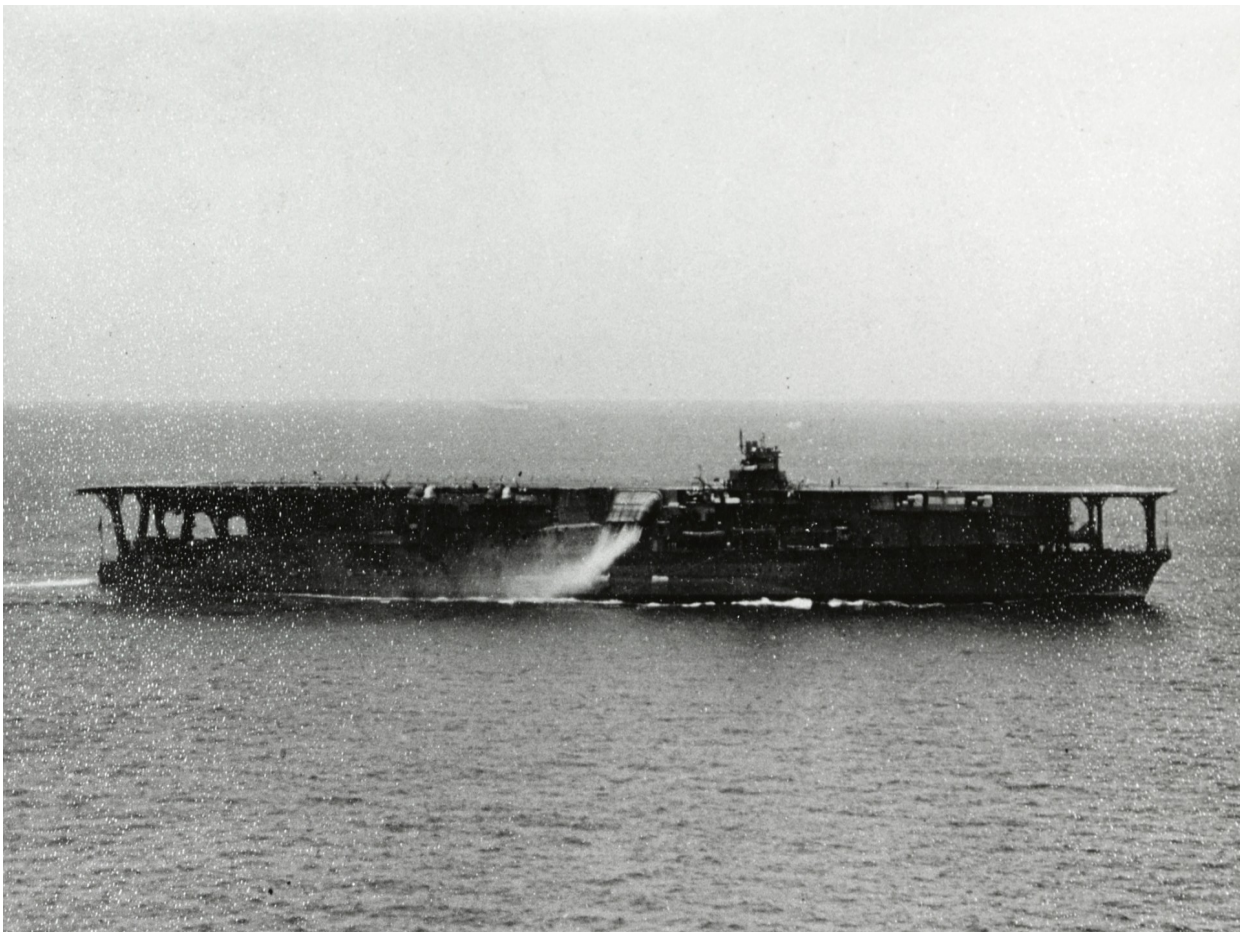
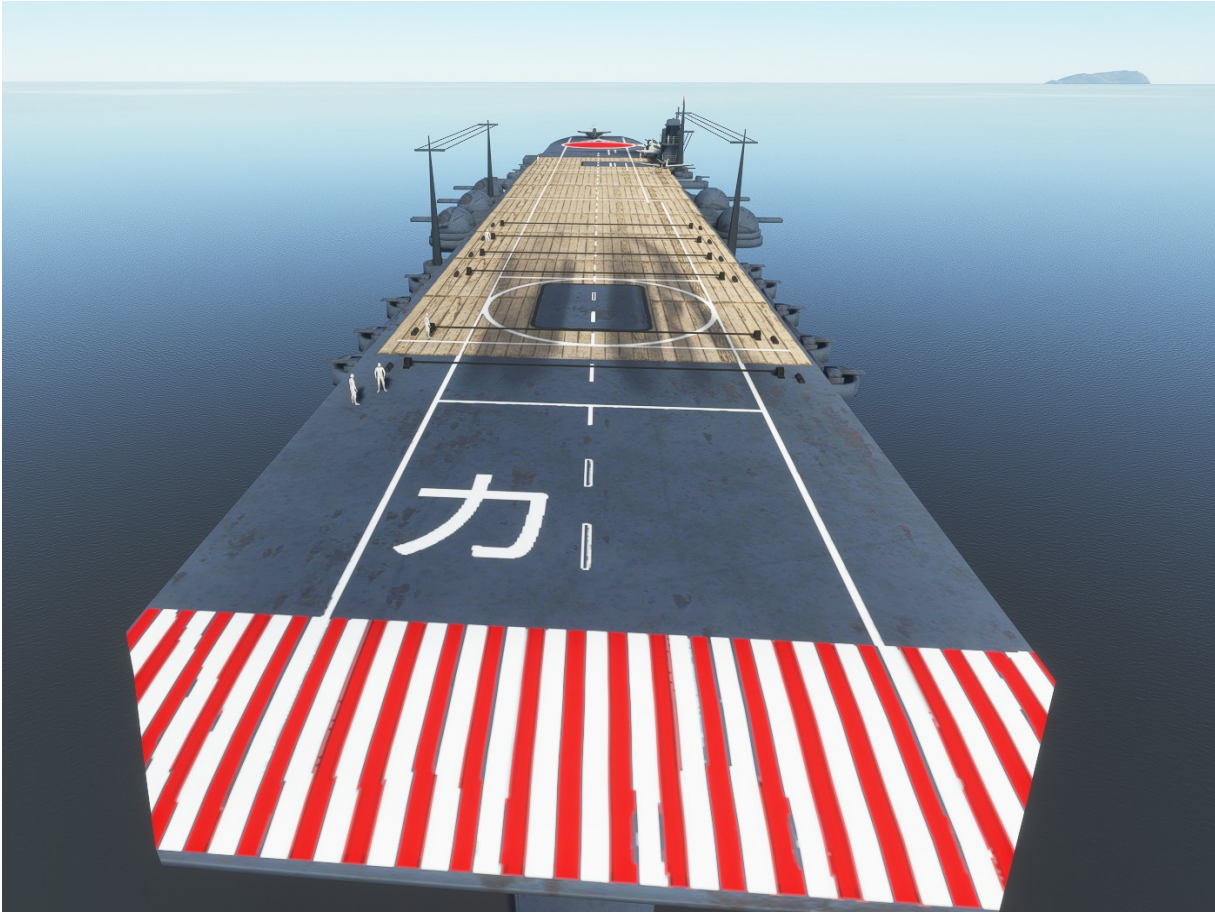
The decks are hardened and you can land on them with some practice. There are no functional wire traps to catch the tail hook of the “Zero”. Just use your brakes and don't come in too fast.

The first carrier is the “AKAGI” with it's typical slanted deck:



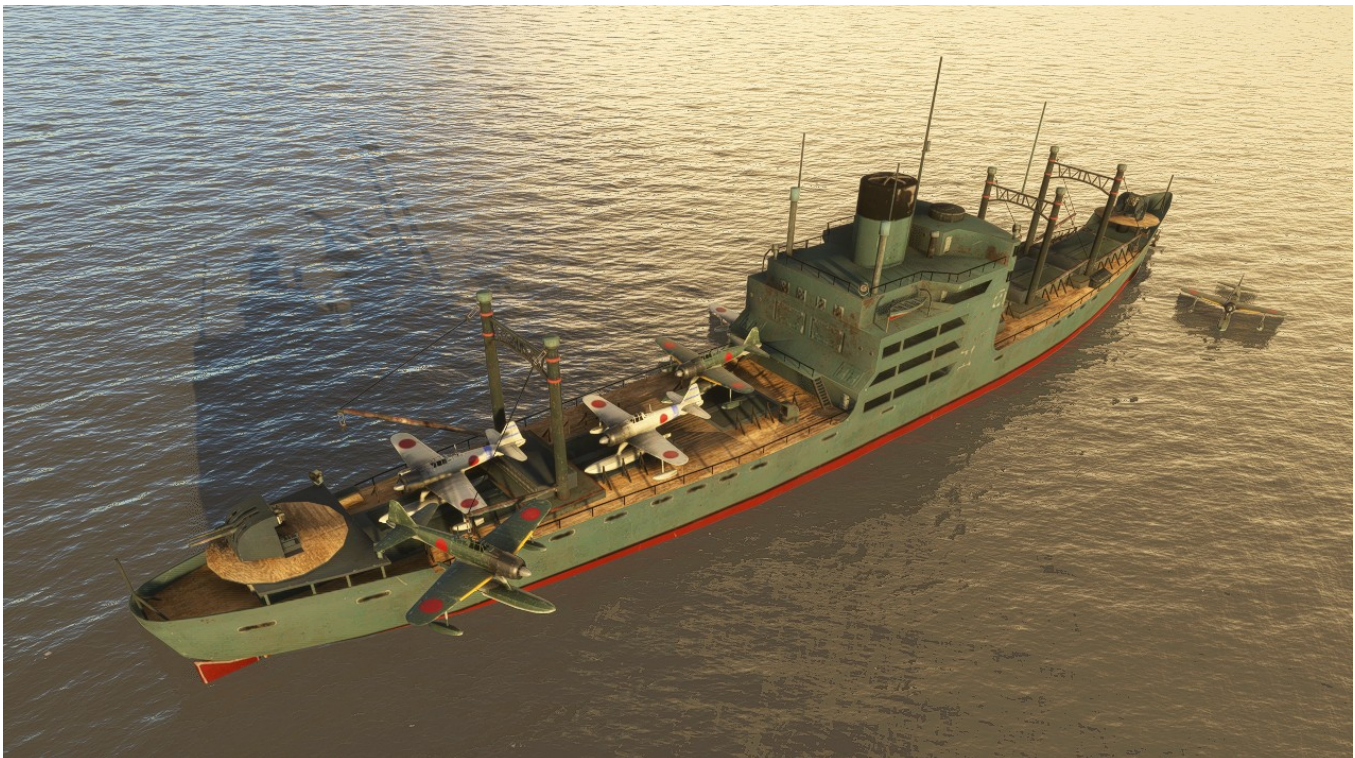
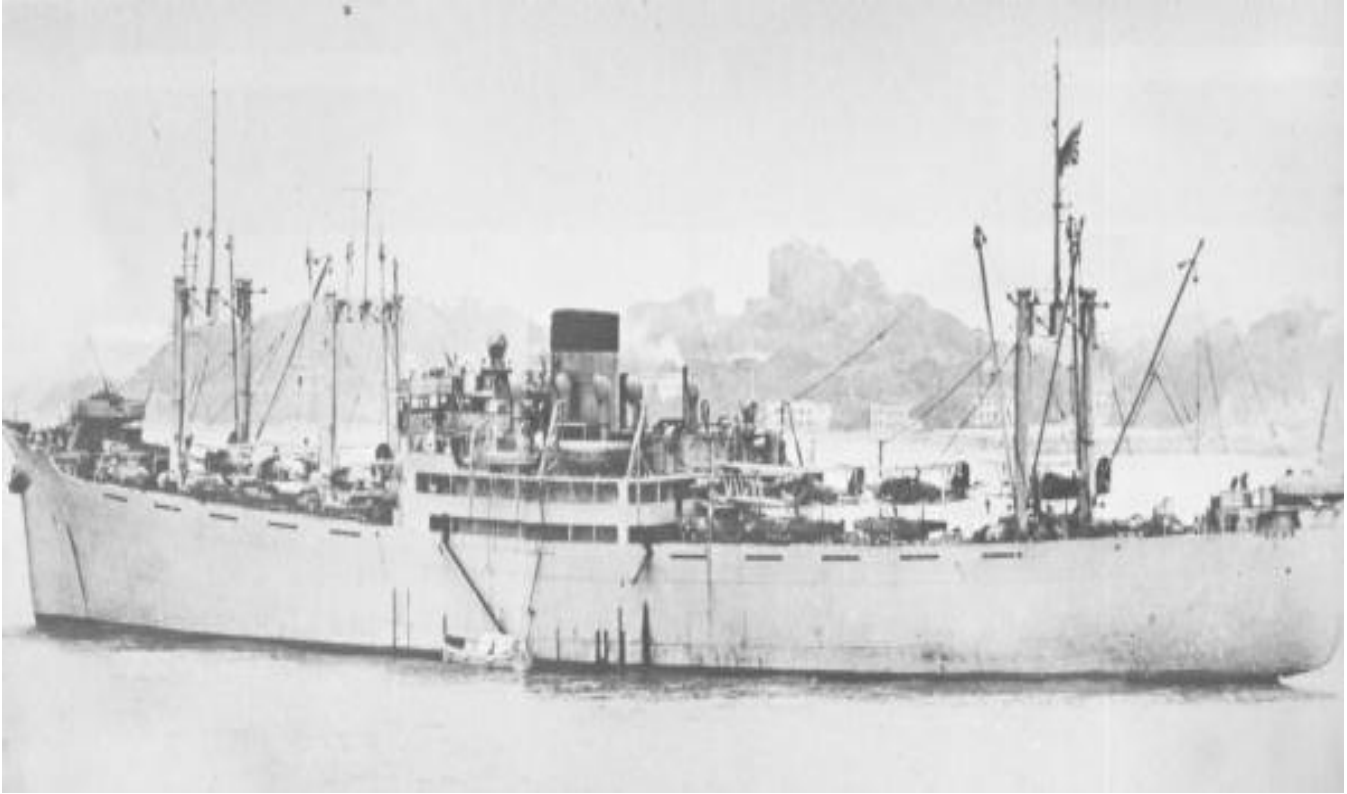


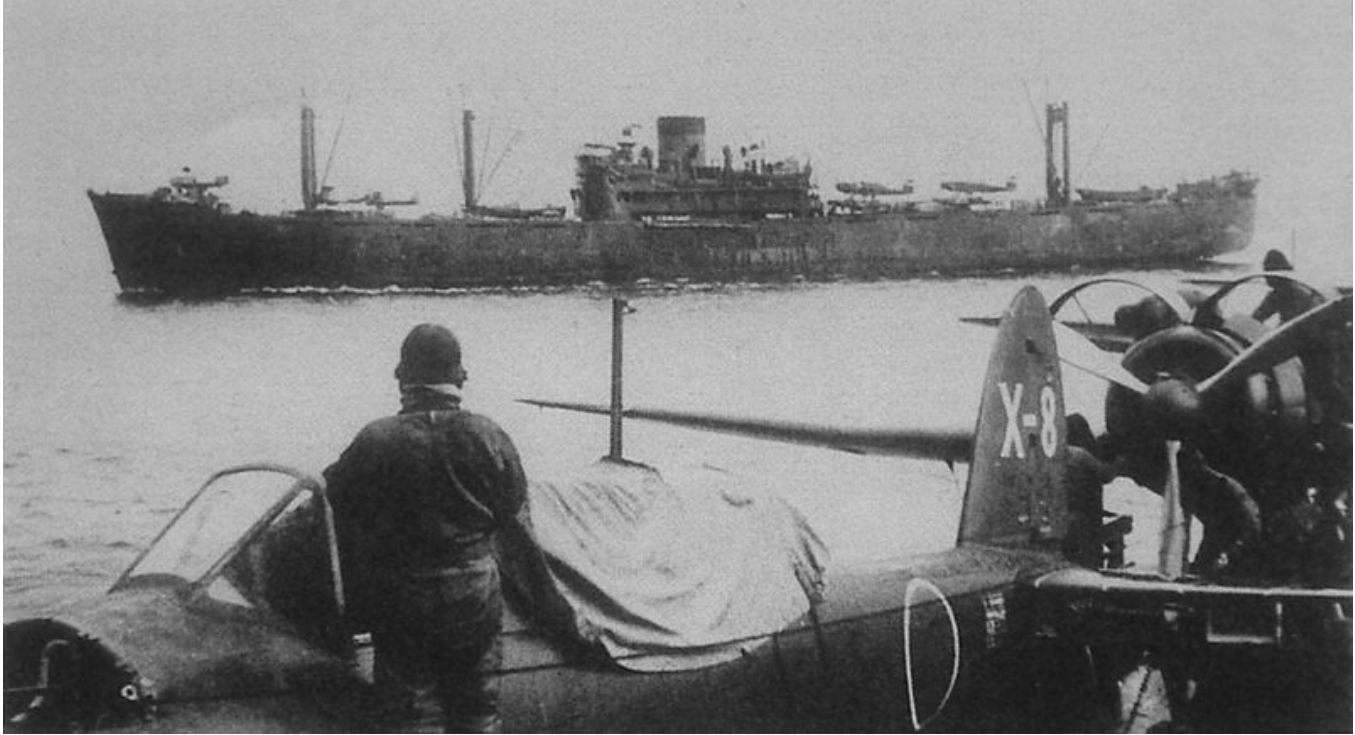
The next carrier is the “KAGA”. She has a flat deck.





I placed as well a Seaplane Tender, the “Kamikawa Maru” near the Island to create an interesting landing spot for your “Rufe” seaplane.





Other ships include Merchant freighters and more.







Other objects are Trucks and AAA Guns.

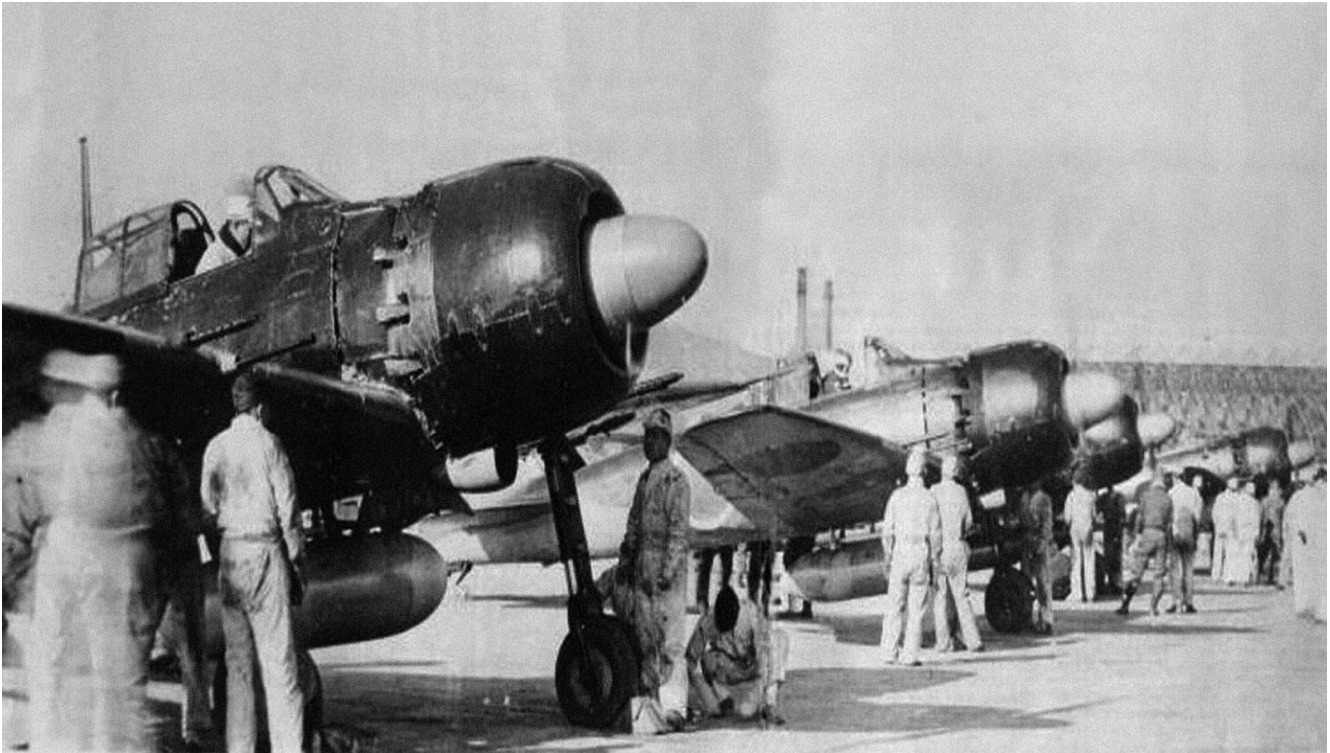


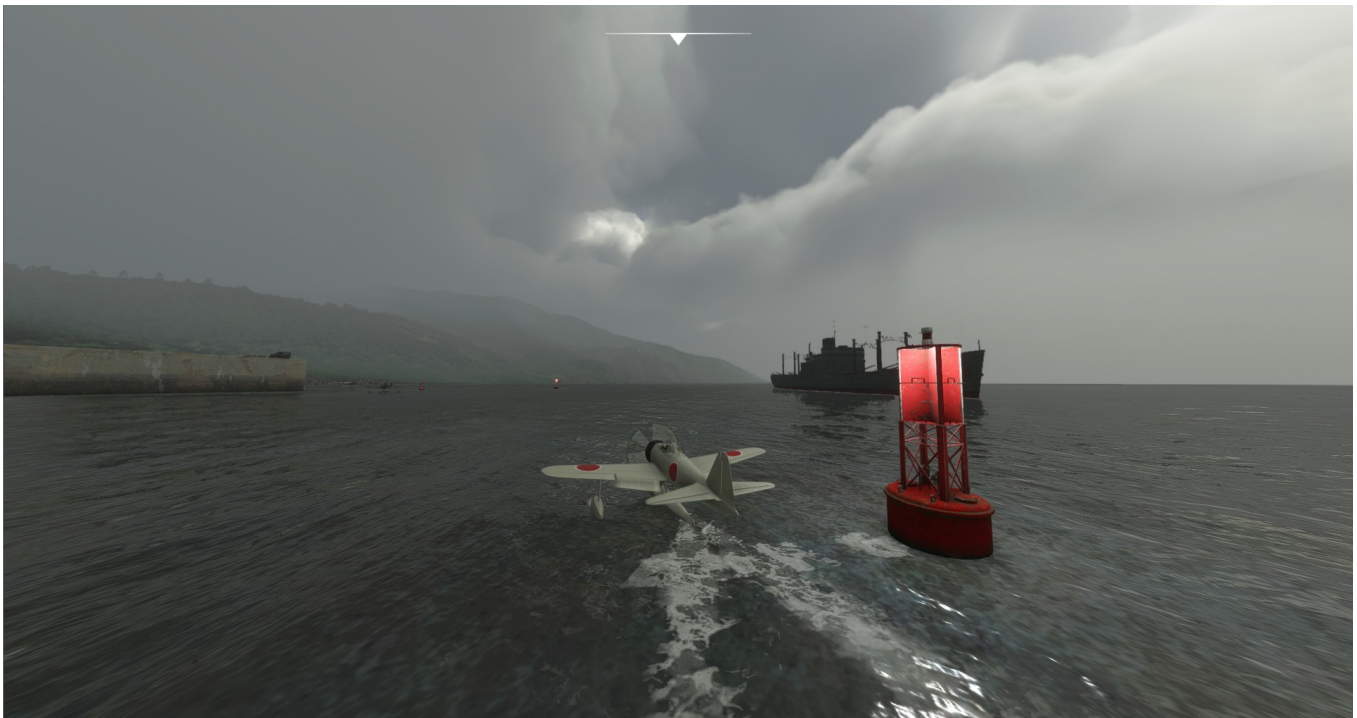
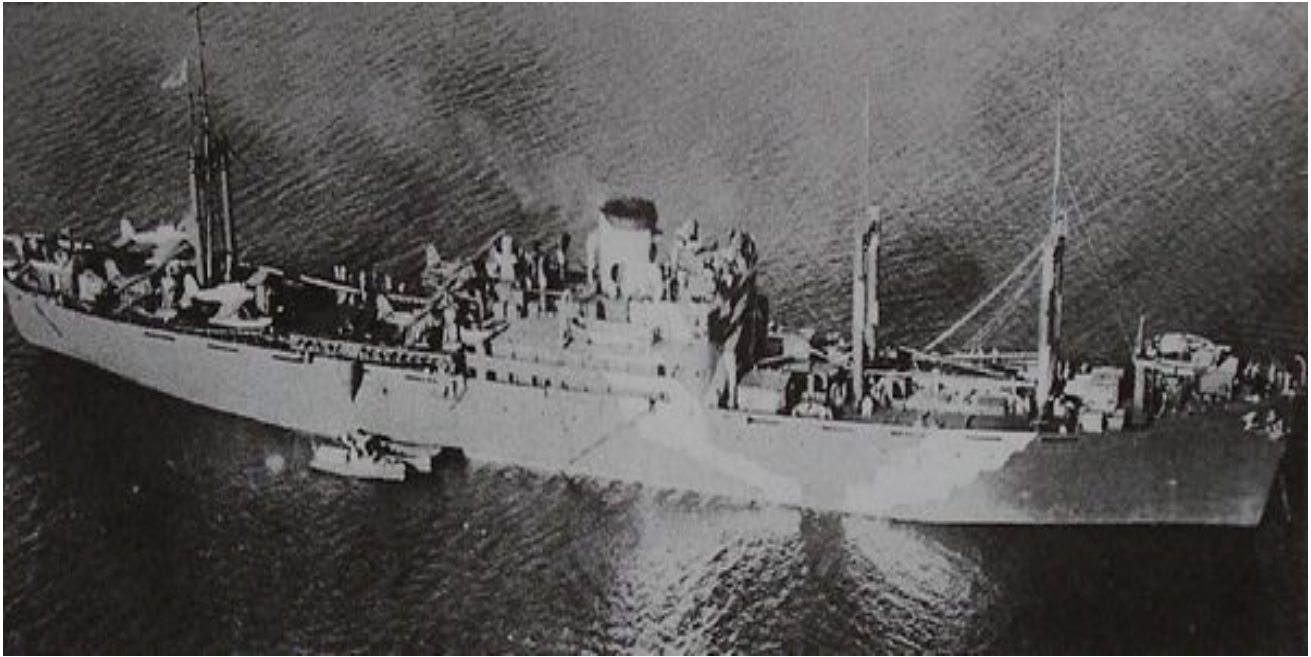




Now have a lot of fun using this *Romantic Wings*
Add-On for Microsoft Flight Simulator 2020







References:

- Internet (Pacific Wrecks: <https://pacificwrecks.com/>)
- Internet (Wikipedia Lizenz: <http://creativecommons.org/licenses/by-sa/3.0>)
- Various modellers of free and payware assets from CGTrader (<https://www.cgtrader.com/>)

Acknowledgements:

The author would like to thank the following people for their contribution to the development of these airfields:

Facebook Group (MSFS 2020 Vintage War Birds)

Facebook Group (Microsoft Flight Simulator 2020 Virtual Reality)

Facebook Group (Microsoft Flightsimulator 2020 Developers Worldwide)

Reddit Group FS2020 Creation (<https://www.reddit.com/r/FS2020Creation/>)

Victor Ortiz, Los Angeles

Paul Cohen, Tokyo

Note:
Some pictures used are from the development phase and may differ from the final version.